

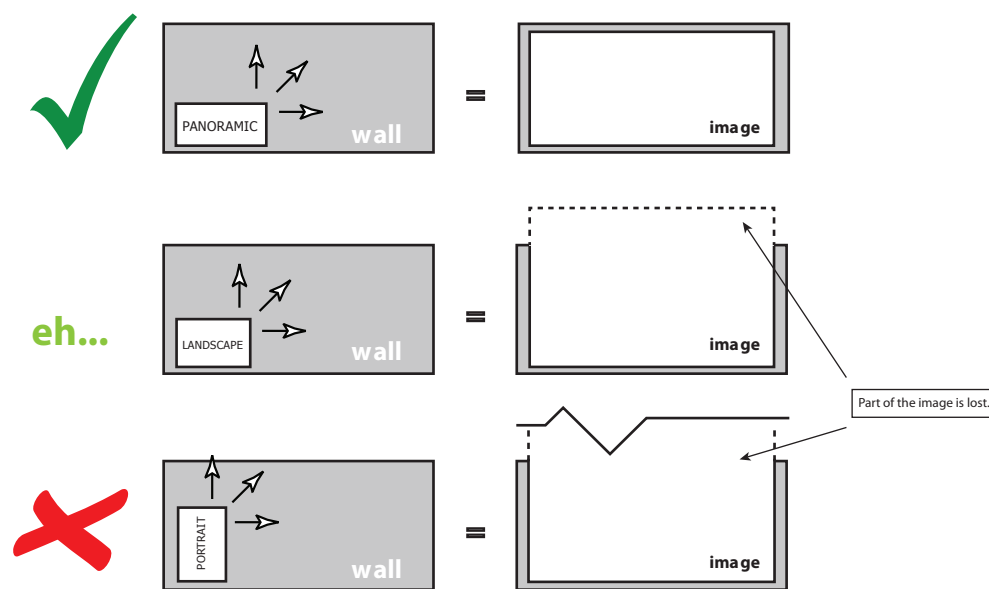
CinemaScope™ Imagery Guidelines

When providing or specifying your own imagery for CinemaScapes, there are a few rules of thumb to follow to ensure a successful product.

The image should have the same aspect ratio as the final print.

While searching for images, you'll more than likely run into three types of aspect ratios: portrait, landscape, and panoramic. Considering most rooms are longer than they are tall, a panoramic image will yield the best possible quality after the image is blown-up.

Using a portrait or landscape image will produce a significant loss in image quality because the sides of the image need to stretch the length of the room. The figure below illustrates this problem. [the dotted line represents wasted image, which results in wasted resolution.]



The image needs to have a very high resolution.

The larger the original image is, the sharper it will be reproduced once blown-up to its new size. For the best results, the image should be no less than 5000 pixels wide. The height is not important as it will change with the aspect ratio.

Regarding DPI

Technically, the DPI of the original imagery (see 'Native Resolution' below) should be 11" x 17" at 300 DPI. However, the important number to look at is the width in pixels -not a reference to DPI. The reason for this is that **the overall area of the image** is usually left out when describing DPI which is critical. If an image is described as being simply 300 dots per inch, how many inches are we talking about? An image can be 300 dpi over 3" x 3" which only stores 900 x 900 px. -Not a very big image. So please only look at pixel width to be sure there is no confusion over DPI terminology.

Native Resolution

The imagery needs to be natively high-res, and not enlarged. For instance, if an 11" x 17" image at 72 DPI is blown-up to 300 DPI in a program such as Adobe Photoshop, it will not gain any detail and look no better than its native 72 DPI resolution. Blowing-up DPI will only duplicate pixels (with interpolation) and leave a massive file with no benefit. Please do not do this, find an image with adequate resolution.

CinemaScope™ City Selections

Below are the images we offer for city skylines. The higher the pixel width, the sharper the print. Large coverage requires a large pixel width.



Lake Michigan and Lincoln Park, Chicago, IL
10988 pixels wide



Red Chicago Sunset
5400 pixels wide



Australia, South Australia
7818 pixels wide



San Diego Skyline at Sunrise
5516 pixels wide



Dramatic Cleveland sunset
7899 pixels wide



Austin at Dusk
5516 pixels wide



Brooklyn Bridge in front of Manhattan
8026 pixels wide



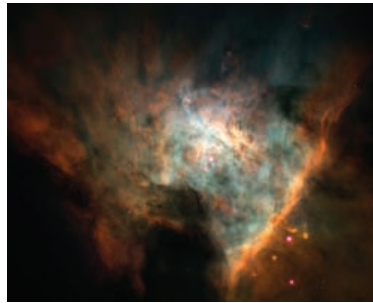
Manhattan Bridge
5695 pixels wide

CinemaScape™ Space Selections

Below are the images we offer for CinemaScape panels. For panel coverage greater than 20', we recommend to use imagery with large pixel widths.



PS_35
6000 pixels wide



PS_11
6000 pixels wide



PS_15 - recommended for ceilings
6000 pixels wide



PS_23
6000 pixels wide



PS_16
6000 pixels wide



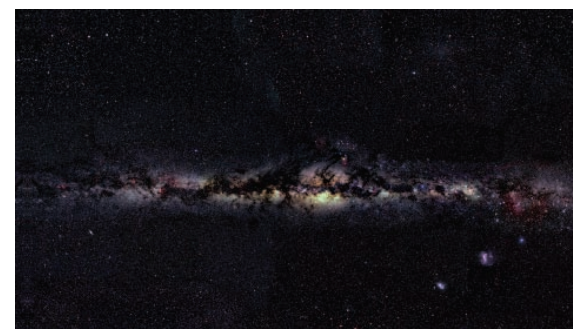
PS_09
6000 pixels wide



Earth
5082 pixels wide



PS_02
6000 pixels wide



Mercator Projection
9309 pixels wide

CinemaScope™ Tuscany Selections

Below are the images we offer for CinemaScope panels. For panel coverage greater than 20', we recommend to use imagery with large pixel widths.



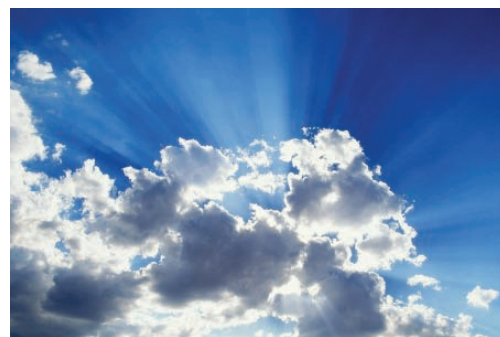
Elevated View of the Village of Sorano, Tuscany, Italy
6891 pixels wide



Minucciano, Tuscany, Italy
6902 pixels wide



Town on a hill top
5400 pixels wide



Sunbeams & Clouds - recommended for ceilings
5202 pixels wide

CinemaScape™ Poster Selections

The poster selections below are intended for reproduction sizes similar to hanging posters and are not recommended for entire wall coverage. Native poster sizes are typically 27" x 40". Reproducing any larger than 36" x 53" is not recommended.



**The Chronicles of Narnia
The Lion, The Witch, and The Wardrobe**
12000 pixels high



**Star Wars
Episode IV - A New Hope**
12000 pixels high



**The Lord of the Rings
The Return of the King**
12000 pixels high



**Harry Potter
And the Philosopher's Stone**
12000 pixels high



**Lemony Snicket's
A Series of Unfortunate Events**
12000 pixels high



**Pirates of the Caribbean
The Curse of the Black Pearl**
12000 pixels high



Scar Face
12000 pixels high



**Indiana Jones
And the Last Crusade**
12000 pixels high



**Lemony Snicket's
A Series of Unfortunate Events**
12000 pixels high



**Miami Beach Florida
Vintage Travel Poster**
12000 pixels high



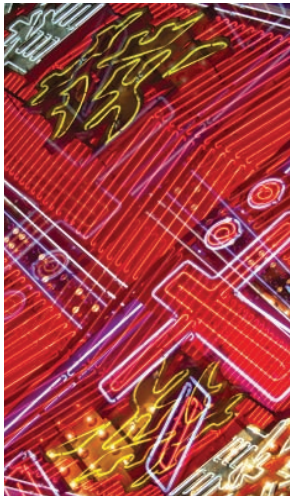
**Boca Raton Palm Beach
Vintage Travel Poster**
12000 pixels high



**Fort Lauderdale Florida
Vintage Travel Poster**
12000 pixels high

CinemaScape™ Abstract Art Selections

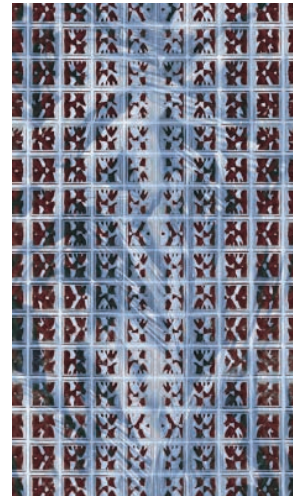
The abstract art imagery below is intended for reproduction sizes similar to paintings and portraits and are not recommended for entire wall coverage.



Abstract_08
6000 pixels high



Abstract_09
7000 pixels high



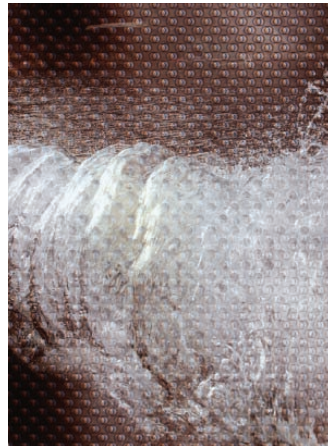
Abstract_01
7000 pixels high



Abstract_02
7000 pixels high



Abstract_03
7000 pixels high



Abstract_07
5500 pixels high



Abstract_04
7000 pixels high



Abstract_06
7000 pixels high



Doors
6883 pixels wide

CinemaScape™ Panel Options

Mounting options

CDGi provides several hanging options. Select from the options or use a nail gun or panel adhesive.

Z-Clips

A mechanical fastener mounted in 2 or 4 corners.

ZC1

Picture Hangers

PH

Picture Wire

PW

Sonic properties

Absorptive

Provides a high degree of absorption to the full band width of frequencies.

#absorpt

Diffusive

A unique combination of absorptive and reflective areas which work together to perform in a diffusive manner.

#diffuse

Reflective

Designed to reflect mid and high-frequencies while allowing a small amount of base absorption.

#reflect

Acoustic panel depth options

CDGi can make your panel perform better in the lower midrange of frequencies by floating the panel back 1" off of the wall. This would provide a significant increase in the sound absorption. The frame profiles will be 1" deeper to allow for the change.

1" acoustic panel

#standard

2" acoustic panel

#deep

Frame Profile Options

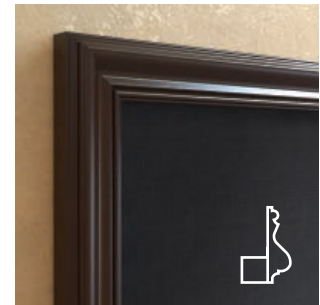
All frames are 3" wide and 1.75" deep.



CDGi #D1731



CDGi #D1722



CDGi #D1724



CDGi #D1729

Available Wood Species



Mahogany

Walnut

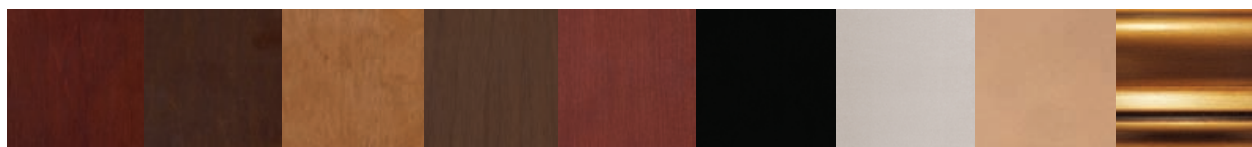
Maple

Cherry

Oak

Poplar

Stains Selections



Mahogany

Dark Walnut

Fruitwood

Walnut

Cherry

Cinema Black

Silver

Gold

Antique Gold

CinemaScope™ Miscellaneous Selections

These images are left over



Turquoise Bay
7154 pixels wide



The Parthenon, Athens, Greece
7735 pixels wide



Cathedral Rock, Sedona, Arizona
10418 pixels wide

